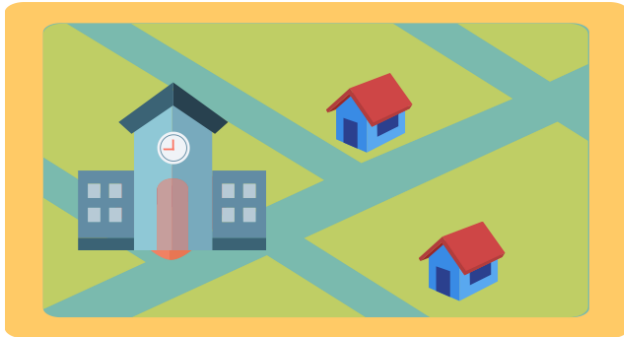


School Boundary Community Meetings

Please join us to discuss boundary lines for your school! As we prepare for the fall 2017 opening of the new K-8 school in the northwest, we need to set new boundaries within the articulation area.



School boundaries determine the district assigned school for a neighborhood, meaning a student living within the boundary has automatic enrollment at that school. Parents may choose to enroll their child at any school as long as there is room, but will always be guaranteed a space at his or her assigned school.

Tuesday,
Sept. 13
5:45-6:45 p.m.
Meiklejohn ES
13405 W. 83rd Place,
Arvada 80005

Wednesday,
Sept. 21
6-7 p.m.
West Woods ES
16650 W. 72nd Ave.
Arvada, 80007

Monday,
Sept. 26
6-7 p.m.
Wayne Carle MS
10200 W. 100th. Ave.
Westminster, 80021